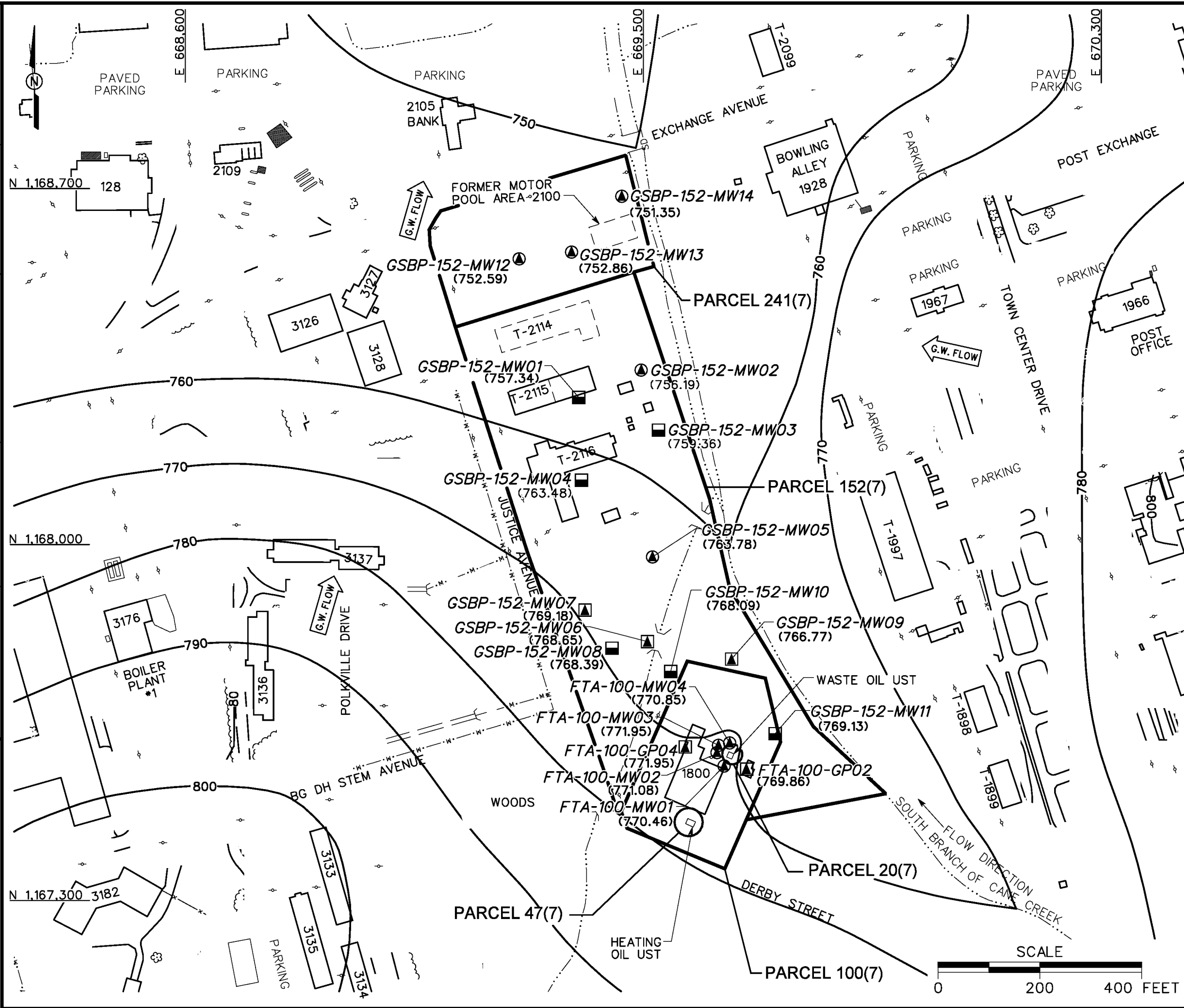


DBILLING
c:\cadd\design\774645es.296
05/29/01 11:11:25 AM
STARTING DATE: 06/27/99
DRAWN BY: D. BILLINGSLEY
DATE LAST REV.:
ENGR. CHK. BY: J. DENDY
DRAFT. CHK. BY:
INITIATOR: J. DENDY
DWG. NO.: 774645es.296
PROJ. NO.: 774645



- LEGEND**
- UNIMPROVED ROADS AND PARKING
 - PAVED ROADS AND PARKING
 - BUILDING
 - FORMER BUILDING LOCATION
 - TOPOGRAPHIC CONTOURS (CONTOUR INTERVAL - 25 FOOT)
 - GROUNDWATER ELEVATION CONTOUR (768.09)
 - GROUNDWATER ELEVATION (FT MSL) (MARCH 14, 2000)
 - GROUNDWATER FLOW DIRECTION
 - TREES / TREELINE
 - PARCEL BOUNDARY
 - SURFACE DRAINAGE / CREEK
 - MANMADE SURFACE DRAINAGE FEATURE
 - FENCE
 - UTILITY POLE
 - GROUNDWATER SAMPLE LOCATION
 - GROUNDWATER, SURFACE AND SUBSURFACE SOIL SAMPLE LOCATION
 - GROUNDWATER AND SURFACE SOIL SAMPLE LOCATION

FIGURE 4-3
GROUNDWATER ELEVATION MAP
AUTOCRAFT SHOP/FORMER DPDO
AND FORMER MOTOR POOL AREA
2100 NORTH OF DPDO
PARCELS 100(7), 20(7), 47(7),
152(7), AND 241(7)

U. S. ARMY CORPS OF ENGINEERS
MOBILE DISTRICT
FORT McCLELLAN
CALHOUN COUNTY, ALABAMA
Contract No. DACA21-96-D-0018